



STEPHENSON BROWNE

Lawton Street, Biddulph, Stoke-On-Trent

ST8 6EY



£1,200

Description

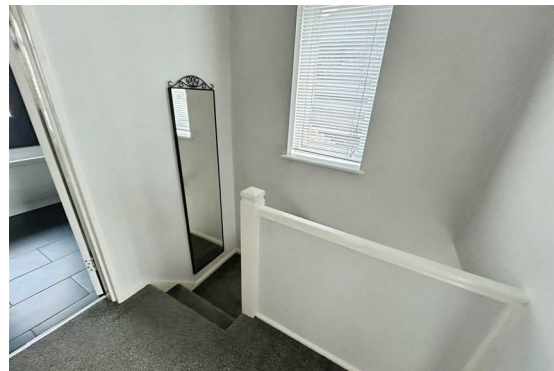
Welcome to this modern and stylish three-bedroom family home located on Lawton Street in the charming town of Biddulph, Stoke-On-Trent. This delightful property offers a perfect blend of comfort and convenience, making it an ideal choice for families or those seeking a spacious living environment.

As you enter the home, you are greeted by a well-proportioned reception room with windows to toe front and rear of the property, providing a light, bright and inviting atmosphere, perfect for relaxing or entertaining guests. There is a fitted kitchen complete with a large separate utility room that adds practicality to your daily routines. This space is designed for both functionality and style, making meal preparation a pleasure.

The property boasts three generously sized bedrooms, providing ample space for family members or guests. The newly installed modern bathroom suite is a true highlight, featuring both a separate shower and a bath, ensuring that you have the perfect space to unwind after a long day.

Step outside to discover the private enclosed rear garden, a wonderful outdoor space for children to play or for hosting summer barbecues with friends and family. Additionally, the property benefits from driveway parking for several cars, offering convenience and peace of mind.

This home is not only well-appointed but also situated in a friendly neighbourhood, close to local amenities and schools. With its modern features and spacious layout, this property is a fantastic opportunity for anyone looking to settle in Biddulph. Do not miss the chance to make this lovely house your new home. Available NOW!

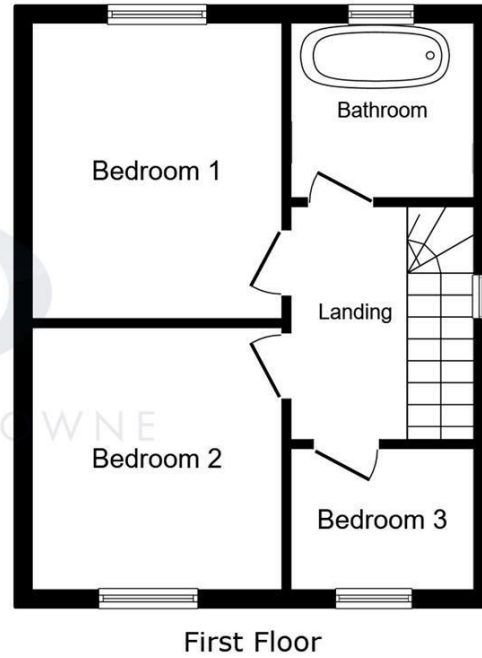
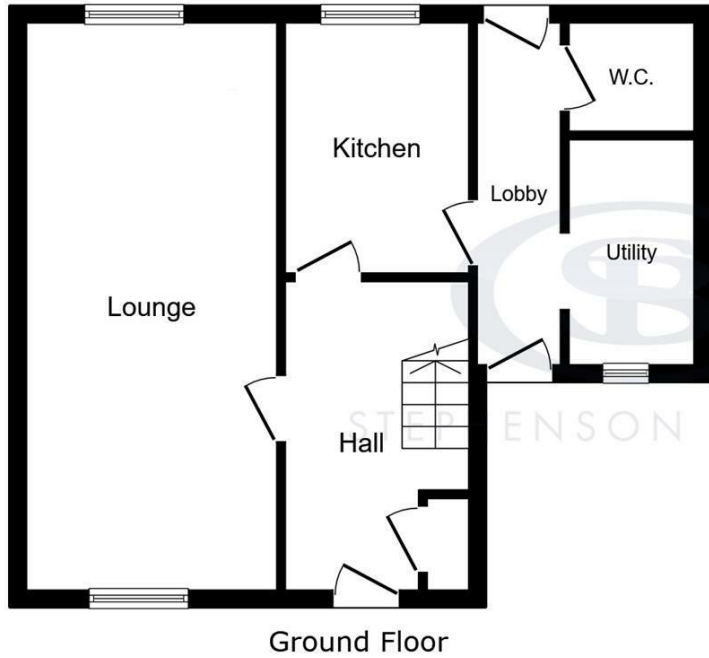


Viewing

Please contact our office using the details provided on the final page if you are interested in booking a viewing or require further information.

Floorplans

43 Lawton Street



Area Map



This floor plan is for illustrative purposes only. It is not drawn to scale. Any measurements, floor areas (including any total floor area), openings and orientations are approximate. No details are guaranteed, they cannot be relied upon for any purpose and do not form any part of any agreement. No liability is taken for any error, omission or misstatement. A party must rely upon its own inspection(s). Powered by www.Propertybox.io



Energy Efficiency Rating		Current	Potential
Very energy efficient - lower running costs			
(92 plus) A			
(81-91) B			
(69-80) C			
(55-68) D			
(39-54) E			
(21-38) F			
(1-20) G			
Not energy efficient - higher running costs			
England & Wales	EU Directive 2002/91/EC	62	77

Environmental Impact (CO ₂) Rating		Current	Potential
Very environmentally friendly - lower CO ₂ emissions			
(92 plus) A			
(81-91) B			
(69-80) C			
(55-68) D			
(39-54) E			
(21-38) F			
(1-20) G			
Not environmentally friendly - higher CO ₂ emissions			
England & Wales	EU Directive 2002/91/EC		

NOTICE: Stephenson Browne for themselves and for the vendors or lessors of this property whose agents they are give notice that: (1) the particulars are set out as a general guideline only for the guidance of intending purchasers or lessees, and do not constitute, nor constitute part of, an offer or contract; (2) all descriptions, dimensions, references to condition and necessary permissions for use and occupation, and other details are given in good faith and are believed to be correct but any intending purchasers or tenants should not rely on them as statements or representations of fact but must satisfy themselves by inspection or otherwise as to the correctness of each theme; (3) no person in the employment of Stephenson Browne has any authority to make representation or warranty whatever in relation to this property. (4) fixtures & fittings are subject to a formal list supplied by the vendors solicitors. **Referring to:** Move with Us Ltd **Average Fee:** £123.64

T: 01260 545600 E: congleton@stephensonbrowne.co.uk

www.stephensonbrowne.co.uk